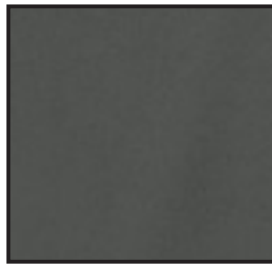


# POLY PERFORMANCE

PERFORMANCE POLYESTER - SOLIDS  
100% POLYESTER INTERLOCK - 4.2oz  
FASHION FIT



**D** Black



**D** Charcoal



**D** Kelly Green



**D** Navy



**B** Neon Green



**B** Neon Orange



**B** Neon Yellow



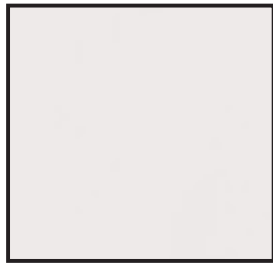
**D** Red



**D** Royal



**B** Turquoise



**A** White



## COLOR ACCURACY FOR SOFT HAND PRINT

- A** Close, but no cigar.
- B** On hue, a few shades off.
- C** Could go either way. You tell me.
- D** Can't be concerned with color.

## UNISEX



**K508**  
Unisex S/S  
Crew Neck

## YOUTH



**K508Y**  
Youth S/S  
Crew Neck

# POLY PERFORMANCE

PERFORMANCE POLYESTER - HEATHER  
100% POLYESTER CATIONIC - 4.3oz  
FASHION FIT



**C** Royal



**C** Charcoal



**C** Kelly Green



**C** Navy



**C** Red



## COLOR ACCURACY FOR SOFT HAND PRINT

- A** Close, but no cigar.
- B** On hue, a few shades off.
- C** Could go either way. You tell me.
- D** Can't be concerned with color.

## UNISEX



**K5039**  
Unisex S/S  
Crew Neck

## YOUTH



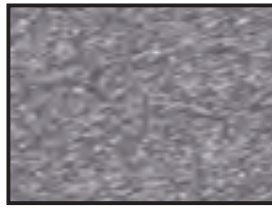
**K5039Y**  
Youth S/S  
Crew Neck

# MARBLED HEATHER

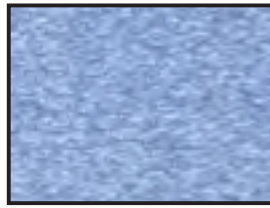
30/1 COMBED RINGSPUN  
60/40 COTTON-POLY BLEND - 4.3oz  
FASHION FIT



**B** Khaki



**D** Black



**B** Blue



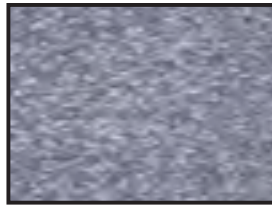
**B** Green



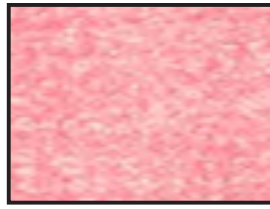
**B** Metal



**D** Military



**D** Navy



**B** Red



**B** Sky Blue



**B** Yellow



## COLOR ACCURACY FOR SOFT HAND PRINT

- A** Close, but no cigar.
- B** On hue, a few shades off.
- C** Could go either way. You tell me.
- D** Can't be concerned with color.

## UNISEX



**K505**  
Unisex S/S  
Crew Neck



**K515**  
Unisex S/S  
V Neck



**K585**  
Unisex Wide  
Strap Tank

## YOUTH



**K505Y**  
Youth S/S  
Crew Neck

## TODDLER



**K505T**  
Toddler S/S  
Crew Neck

# POLY LINEN

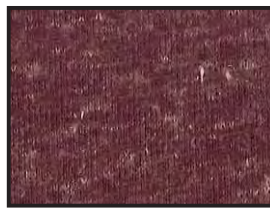
POLY LINEN  
85/15 POLYESTER-LINEN BLEND - 4.3oz  
FASHION FIT



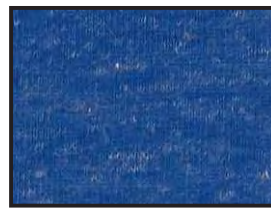
**D** Black



**D** Navy



**D** Merlot



**D** Royal



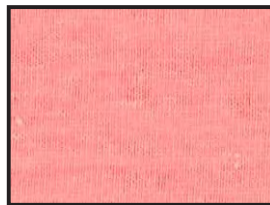
**D** Red



**D** Kelly



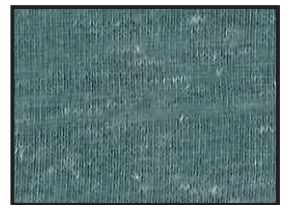
**B** Pool Blue



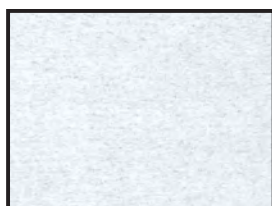
**B** Flamingo



**B** Oatmeal



**D** Spruce



**B** Aqua Ice



## COLOR ACCURACY FOR SOFT HAND PRINT

- A** Close, but no cigar.
- B** On hue, a few shades off.
- C** Could go either way. You tell me.
- D** Can't be concerned with color.

## UNISEX



**K5011**  
Unisex S/S  
Crew Neck



# TRI-BLEND

TRI-BLEND  
50/25/25 POLY-COTTON-RAYON BLEND - 4.2oz  
FASHION FIT



**D** Coal



**D** Onyx



**D** Ebony



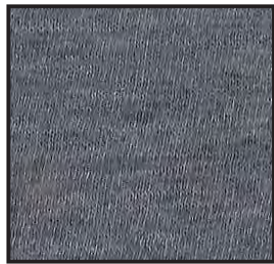
**D** Dark Navy



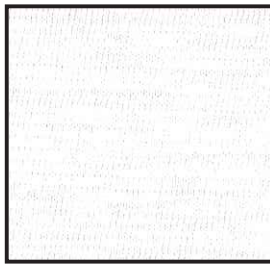
**D** Royal



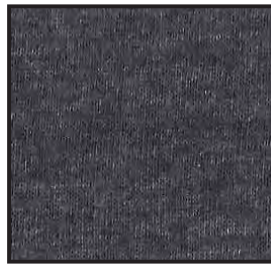
**D** Burgundy



**B** Vintage Grey



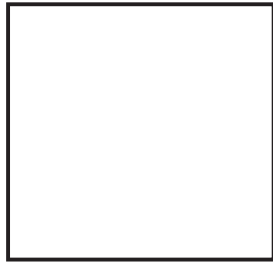
**A** Vintage White



**D** Vintage Black



**D** Grey Heather



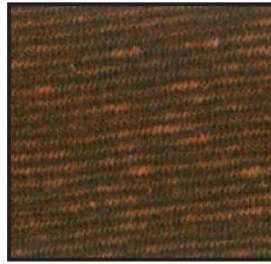
**A** White



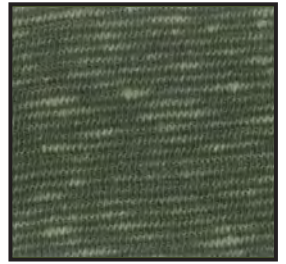
**D** Flame Red



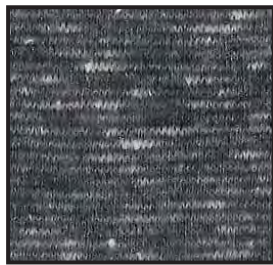
**D** Dusk



**D** Bronze



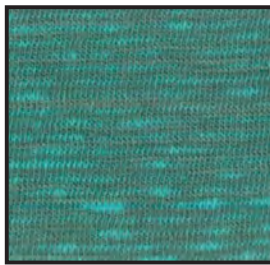
**C** Dill



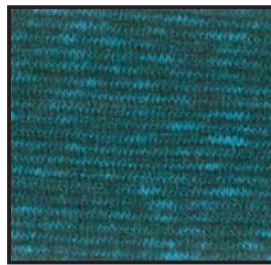
**D** Black



**D** Blue



**C** Seafoam



**D** Teal



## COLOR ACCURACY FOR SOFT HAND PRINT

- A** Close, but no cigar.
- B** On hue, a few shades off.
- C** Could go either way. You tell me.
- D** Can't be concerned with color.

## UNISEX



**K509**  
Unisex S/S  
Crew Neck